

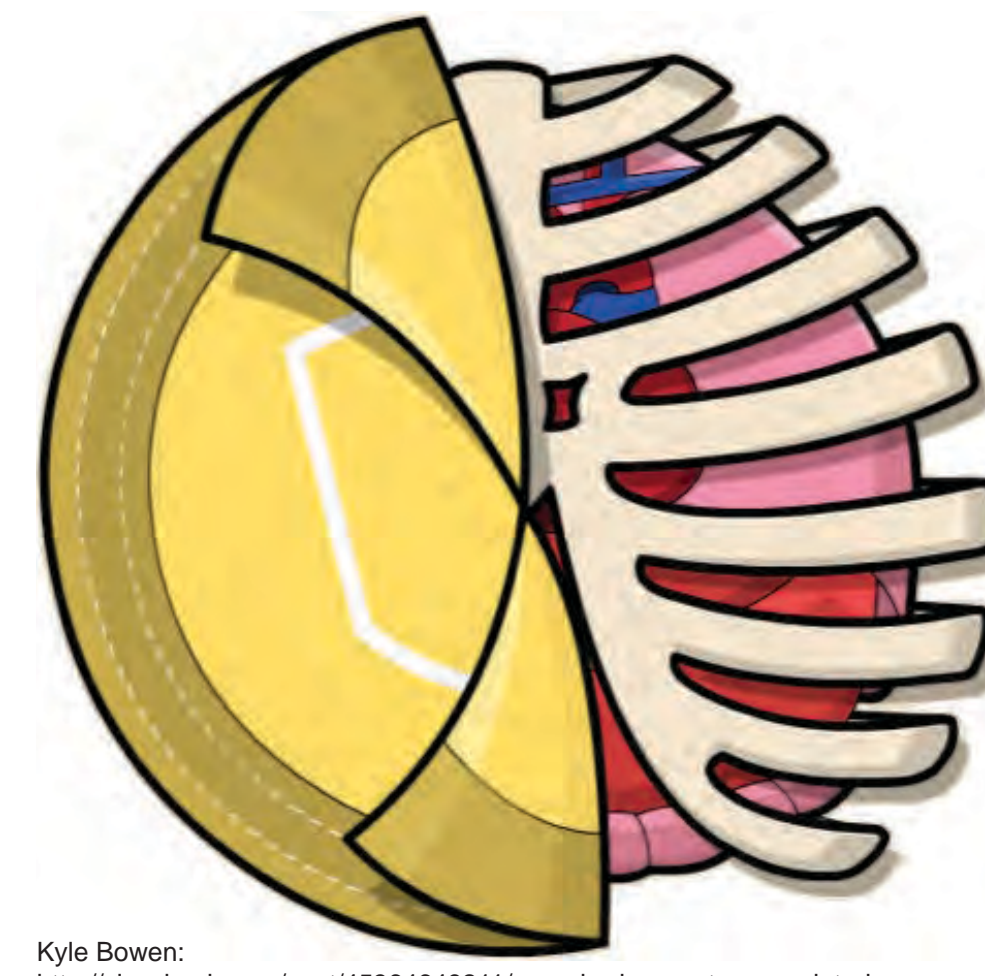
# USING DIGITAL BADGES TO RECOGNIZE UNDERGRADUATE ENGINEERS' CO-CURRICULAR LEARNING

## CONNECTING LEARNING EXPERIENCES

Students struggle to **connect** their co-curricular learning with their curricular experiences & **communicate** with employers

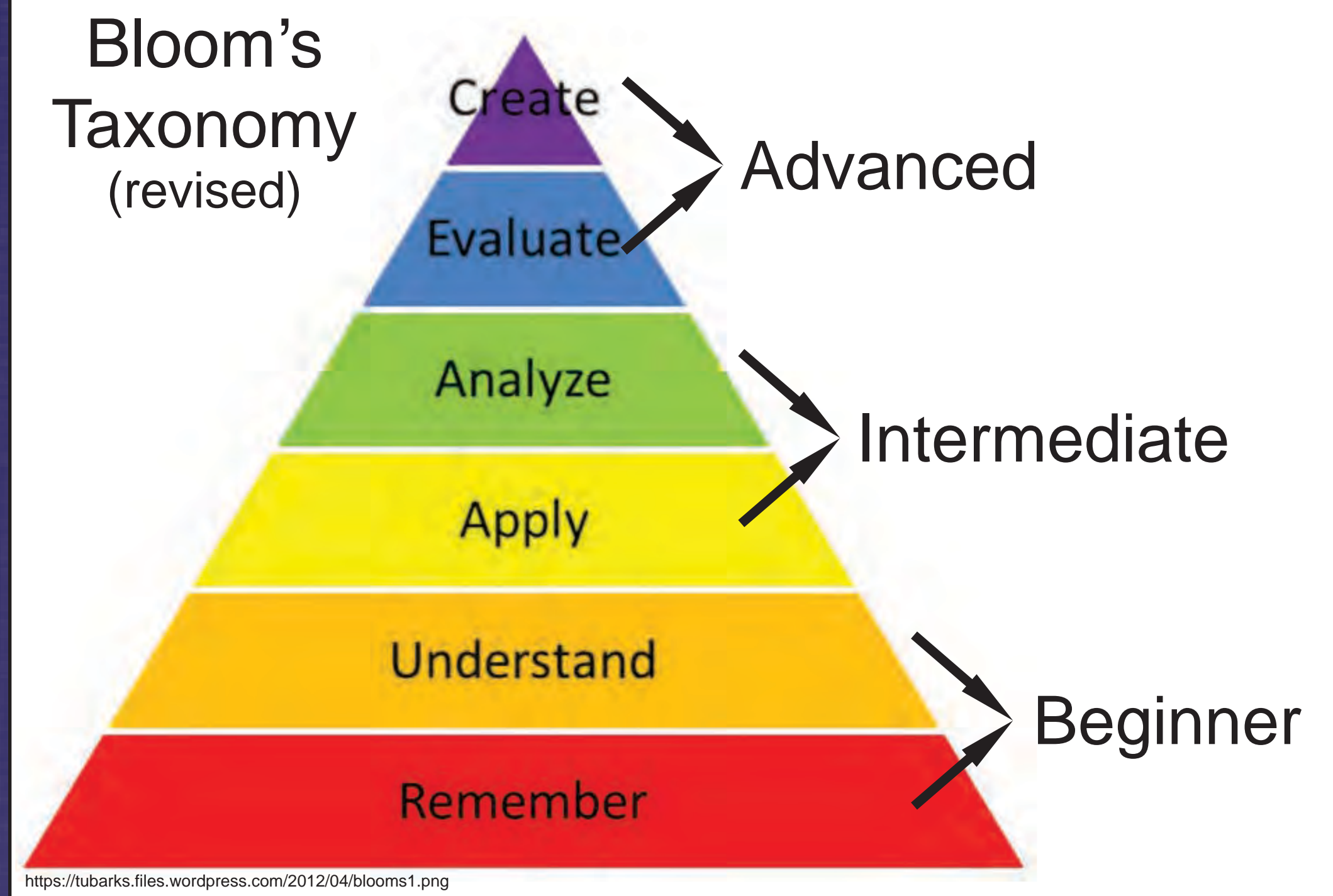


## THE ANATOMY OF A DIGITAL BADGE

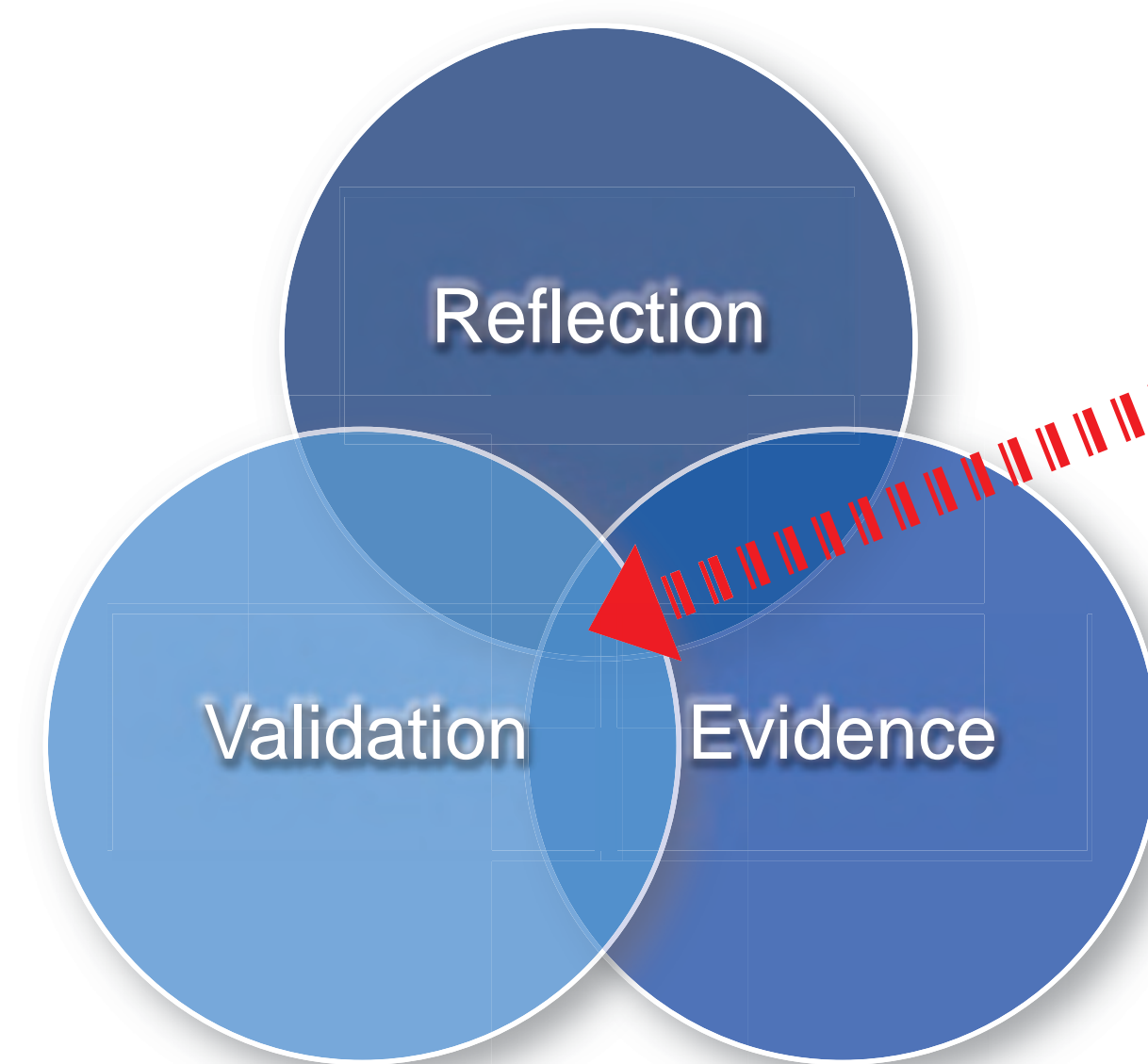


Badge name  
Description  
Criteria  
Issuer  
Evidence  
Date issued  
Standards  
Tags

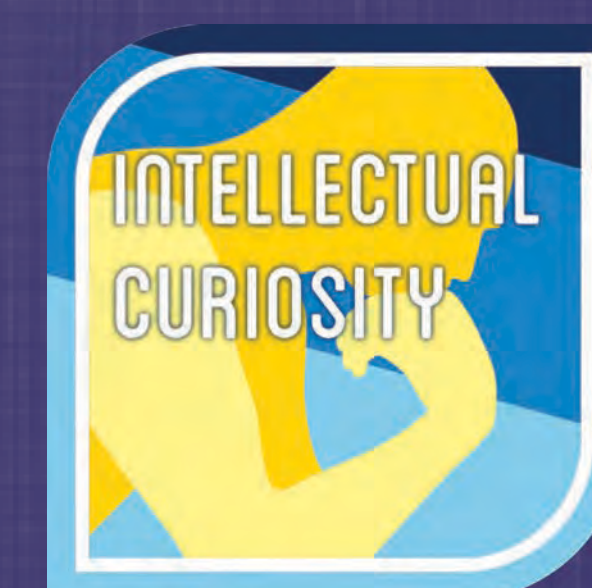
## LEVELS BASED ON COGNITIVE THEORY



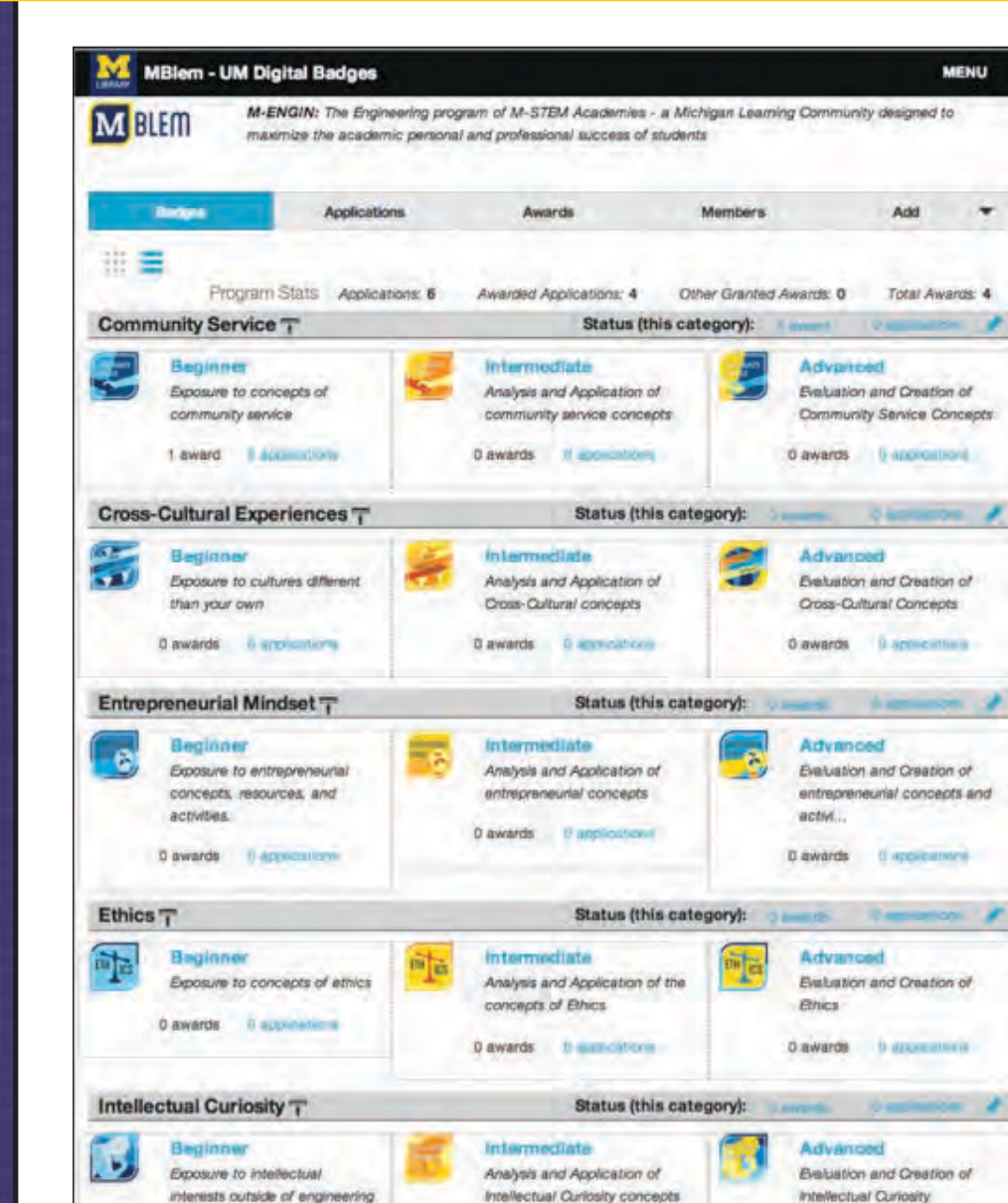
## A CRITICAL INTERSECTION



Where digital badges can make a difference



## A SHARED ONLINE COMMUNITY



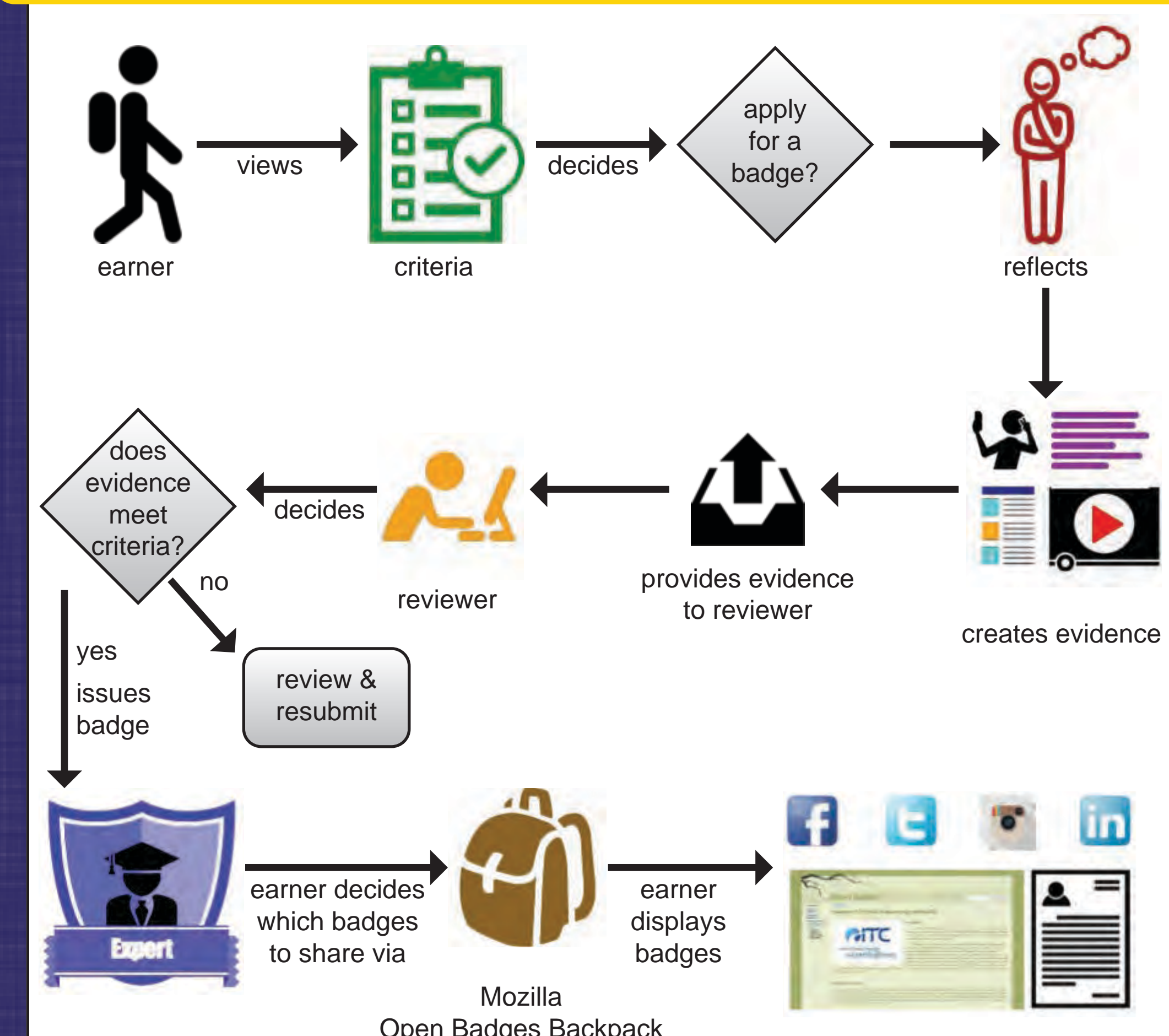
What is visible:  
All levels for each category, who has been awarded each badge, and how many learners have applied

Criteria includes examples, required evidence, and reflection prompts

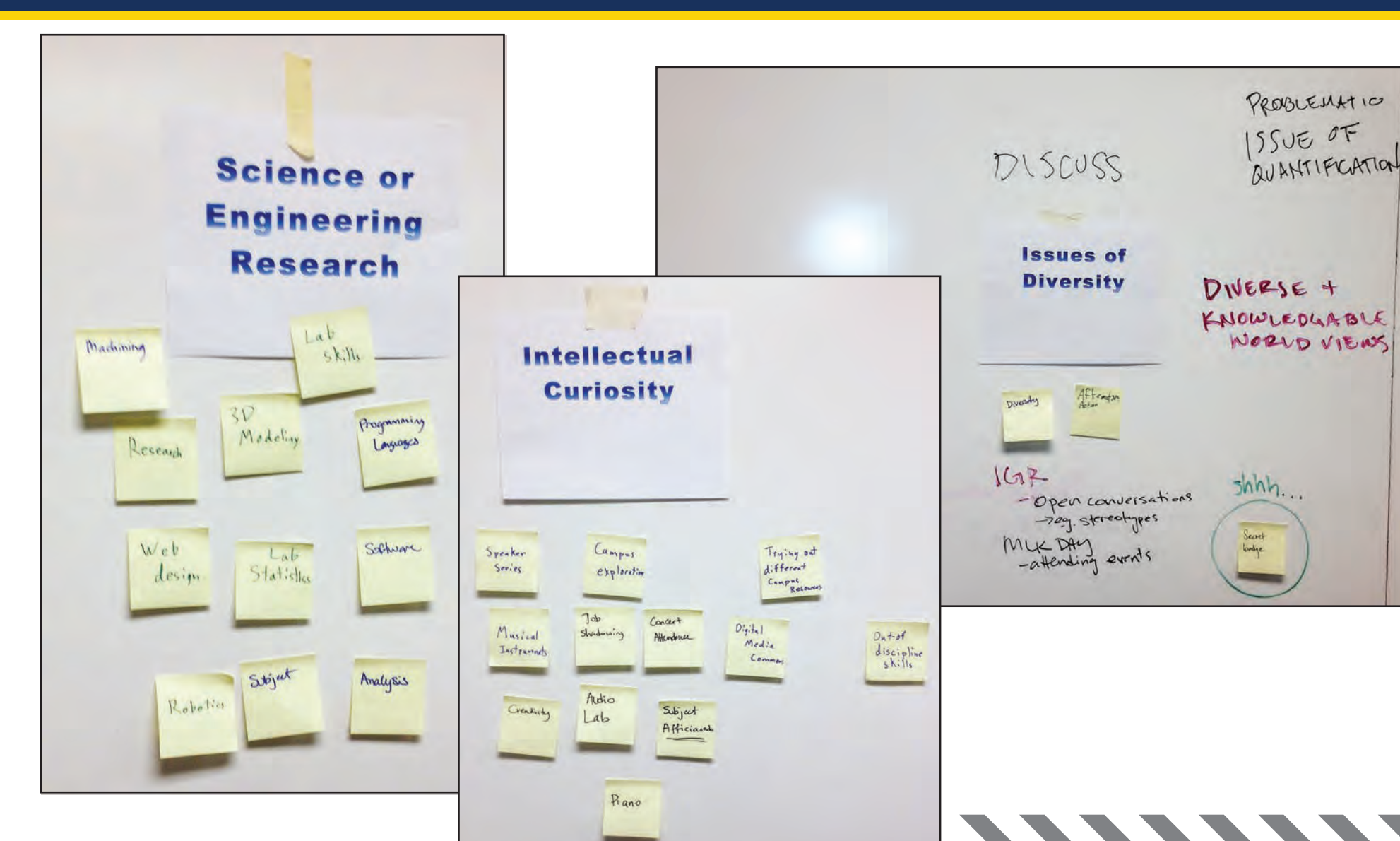


Everyone within the program can view earned badges & evidence

## WORKFLOW TO EARN & DISPLAY



## EMPLOYER AND STUDENT FOCUS GROUPS



Collapsed brainstorm activities into categories using the M-STEM characteristics card

STEVEN LONN, CINDA-SUE DAVIS, DARRYL KOCH, JOANNA MILLUNCHICK, & STEPHANIE TEASLEY